

MONTHLY MEMBERSHIP PROGRESS REPORT

LOCATION CROATIA

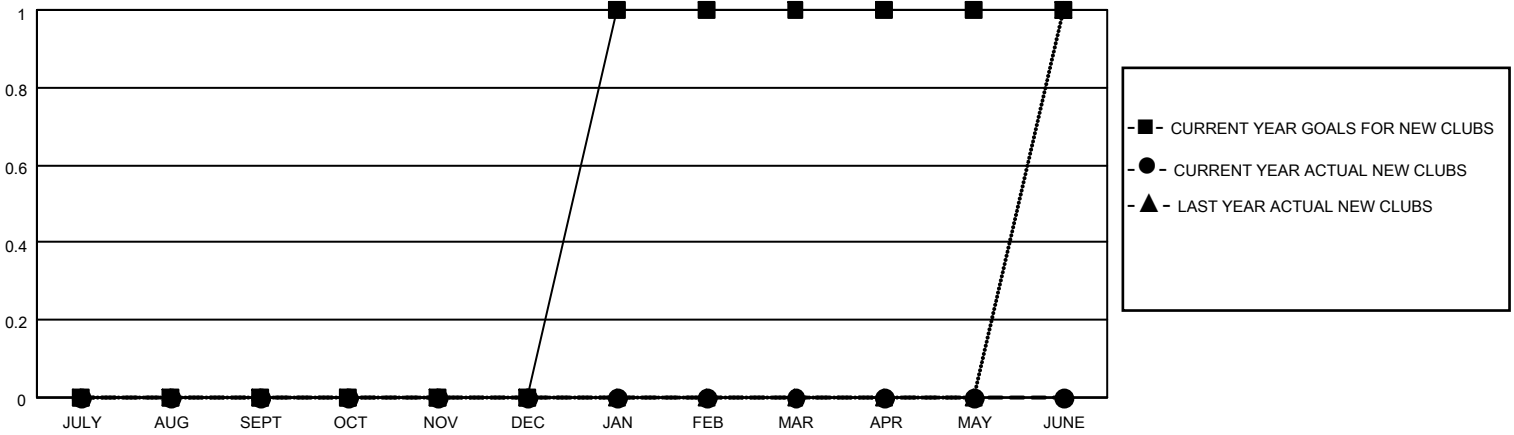
District 126

Results as of: 3/31/2023

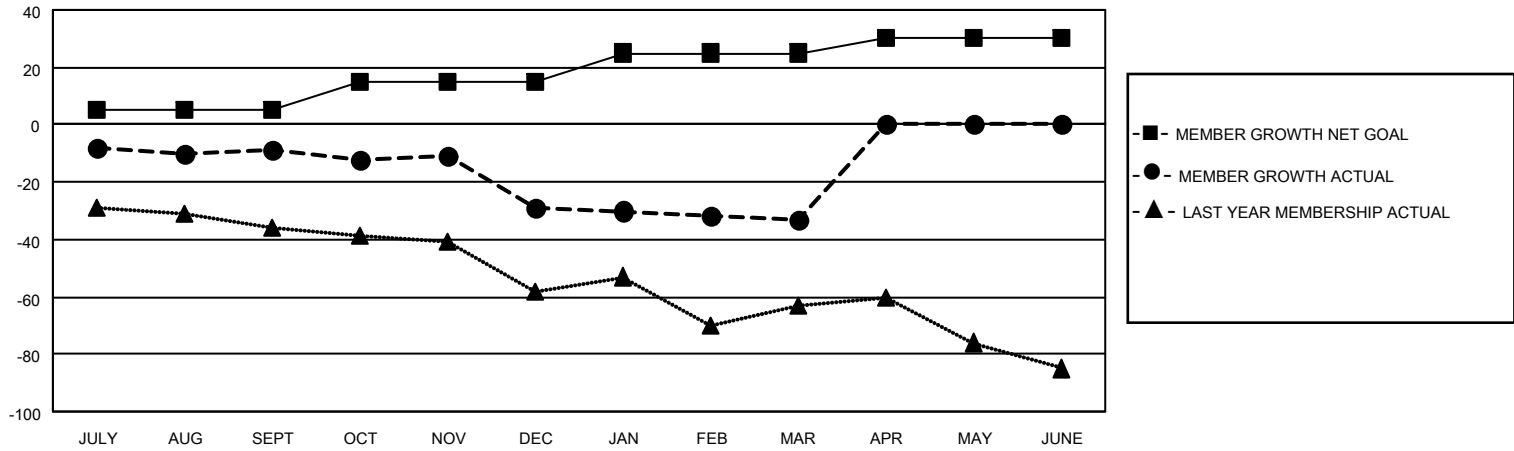
Clubs			
RESULTS FOR 2022-2023			
QUARTER	NEW CLUB GOAL	NEW CLUBS	DROPPED CLUBS
JULY/AUG/SEPT	0	0	1
OCT/NOV/DEC	0	0	0
JAN/FEB/MAR	1	0	0
APR/MAY/JUNE	0	0	0

Members			
RESULTS FOR 2022-2023			
QUARTER	MEMBER GROWTH NET GOAL	MEMBER GROWTH ACTUAL	DROPPED MEMBERS ACTUAL (including transfers)
JULY/AUG/SEPT	5	8	16
OCT/NOV/DEC	10	10	30
JAN/FEB/MAR	10	29	28
APR/MAY/JUNE	5	0	0

GOALS AND ACTUAL NEW CLUBS CUMULATIVE



GOALS AND ACTUAL MEMBERS CUMULATIVE



DROPPED CLUBS: 1	
DROPPED MEMBERS	
DECEASED	4
CLUB CANCELLED	0
OTHER	70
TOTAL	74

18 CLUBS OF 58 ADDED 1 OR MORE NEW MEMBERS

[CLICK HERE FOR CUMULATIVE MEMBERSHIP DATA](#)

<u>GENDER DISTRIBUTION</u>	
MALE	499 (43.77%)
FEMALE	640 (56.14%)
NON BINARY	0 (0.00%)
PREFER NOT TO ANSWER	1 (0.09%)
<hr/>	
TOTAL FAMILY UNIT MEMBERS	23
<hr/>	
FAMILY MEMBERS PAYING HALF DUES	12